



**WEPADDLE**

## **THE DOCTOR 2021**

### **Paddle Travel Logistics for the 'WA Race Week' & 'The Doctor' Events 2021**

Come and enjoy the team atmosphere in Perth for one of the best downwind paddling and racing festivals in the world including 5 races in 8 days:

- 1.** The Westcoast Downwinder – Nth Fremantle to Sorrento, 25km Day 20th Nov.
- 2.** Sunset Series 1 & 2 – Nth Fremantle to City Beach, 12km. Tues 23rd and Thurs 25th Nov.
- 3.** The Shaw & Partners Dash 4 Cash – Sorrento Beach, 300m approx. Friday 26th Nov
- 4.** The Shaw and Partners Doctor – Rottnest Island to Sorrento Beach, 25km. Saturday 26th Nov
- 5.** Plus downwinders every day in between with some technique work on the flat added.

*Accommodation at the stunning Be. Fremantle apartments in Fremantle Marina – marina, harbour or ocean views from both sides & simply paddle straight out of the marina from your apartment into the ocean.*

The start of 3 of the 5 races at Nth Fremantle in the WA Race Week is only a short paddle away!



## PACKAGES INCLUDE

- Team atmosphere and environment with the We Paddle team, including regular team meals (we will also share some logistics and events with the World Paddle group).
- All transport for the stay including paddler and craft transport for races, paddle backs, registration etc.
- Ski hire/or transport of your ski to WA.
- Coaching and on the ground/race day support via Tim Altman & ironman/ ocean paddling legend Todd Boreland.
- Race entries.
- Private Charter to Rottnest Island on race day.
- Ski transport to Rottnest Island for 'The Doctor'.
- Team uniform.
- Access to professional individualised photography/video packages by Dave McGuinness of Kestrel Media (at an extra cost TBA).
- Accommodation at Be. Fremantle apartments on the Fremantle marina/ harbour. Apartments include 1 BR, 2 BR (1 x queen & 1 king or 2 x singles) with 1 bathroom, 2 BR (1 queen & 1 x king or 2 x singles) with 2 bathroom, and 3 BR (1 queen & 2 x king or 4 x singles) with 2 bathrooms. All apartments have full kitchens.
- Stunning views of the marina and/or harbour from all apartments.





## OUR PACKAGES

**November 2021**

### **9 Day Package**

Fri 19<sup>th</sup> - Sun 28<sup>th</sup>

from **\$2,800**

### **6 Day Package**

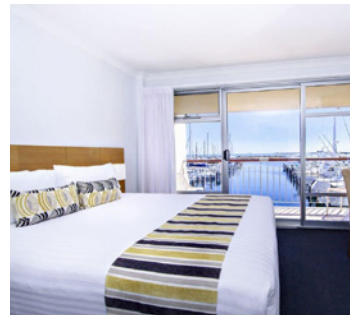
Mon 22<sup>nd</sup> - Sun 28<sup>th</sup>

from **\$2,400**

### **4 Night Package**

Wed 24<sup>th</sup> - Sun 28<sup>th</sup>

from **\$2,200**



**WE PADDLE**

[tim@timaltman.com.au](mailto:tim@timaltman.com.au)

0425 739 918